

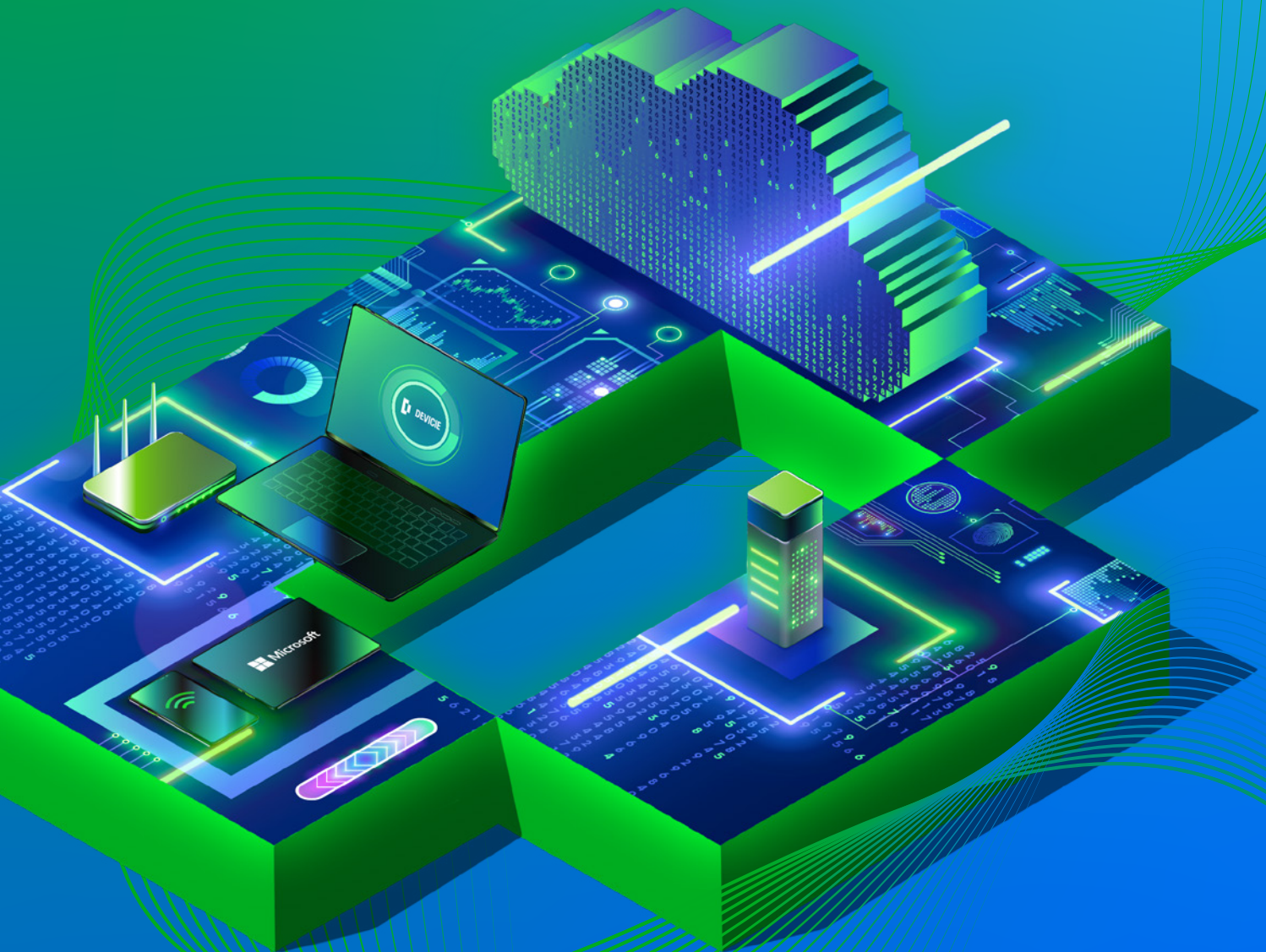


Member of
Microsoft Intelligent
Security Association



Your journey to Windows 11 and beyond

From first steps to cloud native with Device



Navigating the Transition to Windows 11

The rapid pace of technological evolution requires businesses to stay agile, competitive, and secure. As Microsoft phases out support for Windows 10, upgrading to Windows 11 is not just a matter of convenience – it's a necessity. With the October 2025 deadline fast approaching, ensuring your devices and infrastructure are ready is critical. This will enable you to safeguard against future risks while unlocking new productivity tools.

This guide will help you navigate the transition, explore the pathways available, and outline key steps to future-proof your organization by integrating cloud-native solutions for a more scalable, secure, and efficient future.



Why Transitioning to Windows 11 Is Essential

The upcoming end of support for Windows 10 marks a pivotal moment for organizations. Beyond the obvious benefits of upgrading (such as improved productivity and security), staying on Windows 10 post-October 2025 exposes businesses to several risks:

- **Security Vulnerabilities:** Once support ends, Windows 10 devices will no longer receive vital security updates, leaving systems susceptible to cyber threats and exploits.
- **Performance & Productivity Gaps:** Without regular updates, performance enhancements and bug fixes will be unavailable, leading to potential slowdowns, inefficiencies, and compatibility issues with modern tools.
- **Costly IT Interventions:** As time goes on, maintaining outdated systems often becomes costlier than upgrading, with IT teams spending more time and resources troubleshooting aging infrastructure.

Organizational Risks of Manual Windows 11 Transition

Transitioning to Windows 11 manually can present significant challenges for organizations. Without a streamlined solution, the process can be time-consuming and resource intensive. Here are some key risks:

EXTENDED TIMEFRAMES

The migration process may take longer than expected, particularly when dealing with many devices or complex infrastructures.

RESOURCE DRAIN

Managing a manual transition can place a heavy burden on IT departments, pulling valuable resources away from other critical initiatives.

TRIAL AND ERROR

Testing compatibility, resolving technical issues, and managing device configurations manually can lead to unexpected errors, requiring repeated effort to get things right.

SECURITY GAPS

Without a structured approach, organizations risk leaving devices vulnerable during the transition, especially if updates and patches are not efficiently managed.

The Benefits of Windows 11: Built for the Modern Workforce

Microsoft's vision for Windows 11 is clear:

It's more than an operating system—it's a platform that drives innovation and efficiency through intelligent design, seamless integration, and future-proof security.

Breakthrough Productivity

Harness the power of AI-driven workflows and personalized user experiences that drive efficiency across your teams. Windows 11 is designed to make collaboration smoother and multitasking easier with features like Snap Layouts, Microsoft Teams integration, and enhanced virtual desktop functionality.

Protection by Default

Windows 11 brings a security-first approach, offering comprehensive protection at every level, from hardware and software to identities and data. Built-in tools like Windows Hello for Business and BitLocker offer enterprise-grade security, ensuring your organization remains resilient in an era of rising cybercrime.

Unlock AI Advantage

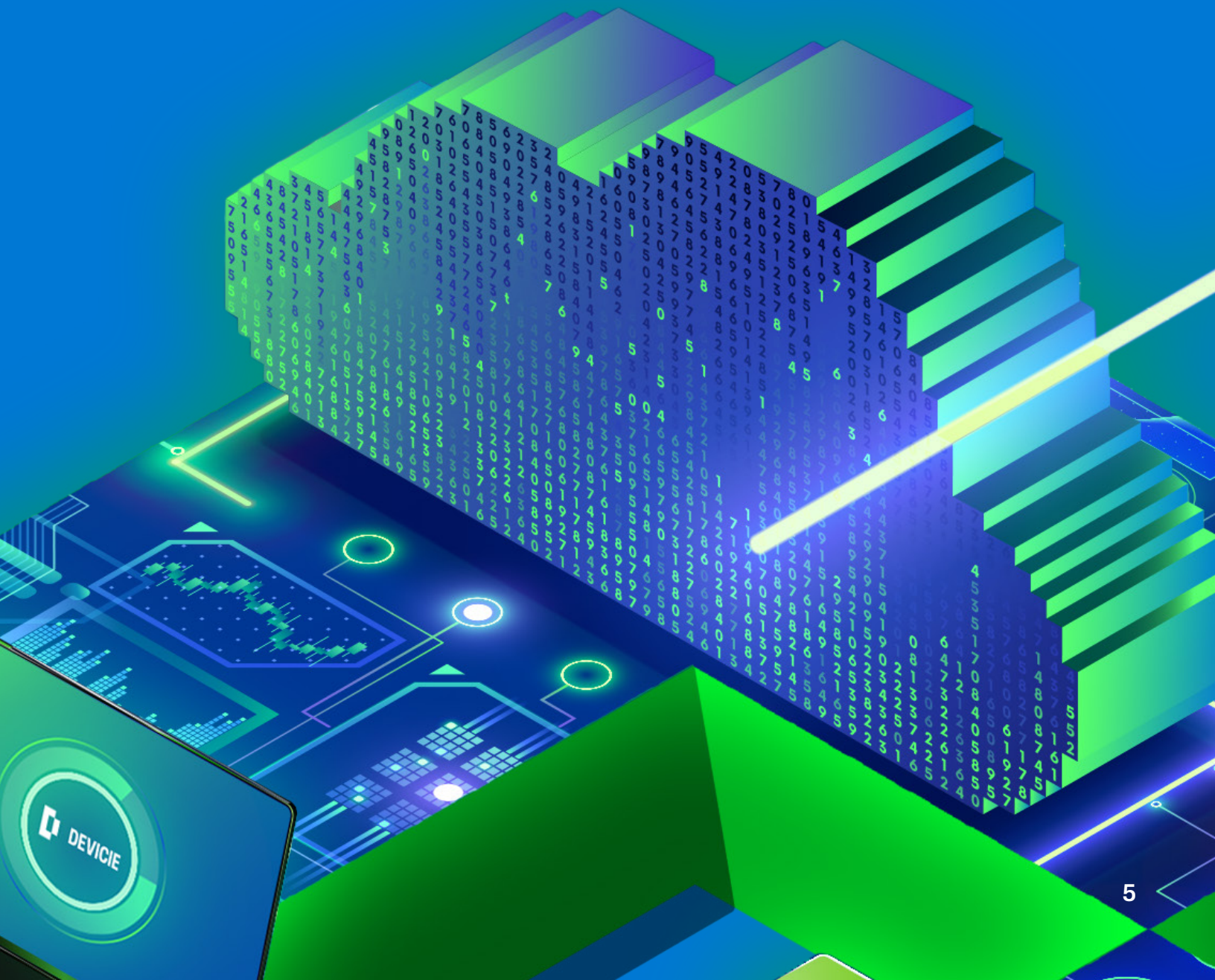
With Windows 11, businesses gain access to advanced AI tools that help streamline workflows and enhance decision-making, ensuring you stay ahead in an AI-driven future.

Quiet Help Desks, Happy Employees

Thanks to improved user self-help tools and simplified device management, employees can troubleshoot issues on their own. This leads to happier, more productive teams and a reduced burden on IT support.

“We had a hybrid IT environment and shouldn’t have tried straddling legacy and the future. Now (with Devicie) we can take our clients to future state much faster too.”

Craig Somerville
EGM, Atturra (MSP)



Pathways to Transition: Refresh or Go Fully Cloud-Native

Every organization's journey to Windows 11 will look different, but there are two primary pathways to ensure a smooth and successful migration.

Path 1: For organizations looking to upgrade while maintaining their current hardware infrastructure, this approach ensures a smooth transition to Windows 11 without fully committing to cloud-native solutions right now.

This pathway offers a practical approach for organizations seeking to make the move while maintaining familiar systems, with the option to explore cloud capabilities through hybrid solutions.

1

Path 1: Refresh Your Existing Devices

No#	Description
1	Audit Your Environment: Assess your current device landscape and identify which systems are Windows 11 compatible.
2	Inventory Your Applications: Ensure critical business apps, security programs, and licenses are compatible with Windows 11.
3	Prepare for Migration: Create a detailed migration plan, including timelines, resource allocations, and backup strategies.
4	Test and Deploy: Begin with a pilot group of users to test the installation before rolling it out organization-wide.
5	Cloud Gateway Integration: Connect your existing Configuration Manager estate to the cloud for remote management, using tools like Intune for a hybrid cloud-native approach.
6	Post-Migration Support: Implement training and support programs to ensure employees are equipped to navigate the new operating system confidently.

Path 2: For those ready to fully embrace the future of work, transitioning to a **fully cloud-native solution** as part of your Windows 11 migration allows you to optimize scalability, security, and efficiency.

While the upfront effort is higher, the long-term benefits – scalability, reduced management complexity, and enhanced security – make this the ideal choice for businesses looking to future-proof their IT environments.

2

Path 2: Embrace a Fully Cloud-Native

No#	Description
1	Define Cloud-Native Goals: Outline your organization’s long-term goals around cloud scalability, cost efficiency, and security.
2	Audit and Inventory: Similar to Path 1, assess your environment but focus on ensuring cloud-readiness across all devices.
3	Cloud-Ready Infrastructure: Evaluate your network’s capacity to handle increased cloud traffic and ensure your devices meet modern compliance standards.
4	Deploy Intune and Windows 11: Begin by deploying both Windows 11 and Microsoft Intune with a test group, ensuring smooth integration of cloud management tools.
5	Optimize Cloud Resources: Rely on continuous monitoring tools to track cloud resource usage and control costs.
6	Enhanced Security: Ensure all users are secured with multi-factor authentication and benefit from Microsoft’s cloud-native security features.
7	Monitor and Evolve: After the migration, continue optimizing your cloud infrastructure to meet evolving business needs.

Summary:

Ensuring the Right Tools for Success

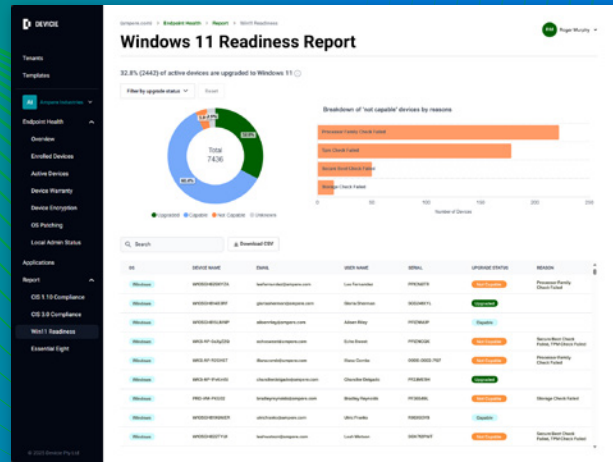
Choosing the right pathway for your transition to Windows 11 – whether it’s refreshing your existing devices or fully embracing a cloud-native solution – is a critical decision for any organization. Both options have clear benefits, but the key to a successful migration lies in ensuring that your business has the right tools, resources, and strategy in place.

Without the proper support, businesses risk facing delays, increased costs, or unexpected complications during the transition process. Tailoring your approach to suit your specific business needs is essential for achieving optimal results, from improved productivity to enhanced security.

In the end, it’s not just about moving to a new operating system. It’s about positioning your business to fully leverage its capabilities and future-proofing your operations.



Windows 11 Readiness: Assessing Your Upgrade Path



Navigating a Windows 11 transition requires clear visibility into your device landscape. The Windows 11 Readiness Report provides organizations with a data-driven assessment of their upgrade needs, ensuring a smooth and efficient migration. Available exclusively to Device customers or those participating in a Proof of Value (POV), this report delivers actionable insights to help IT teams plan with confidence.

What's Included in the Readiness Report?

✓	<p>Current Windows Device Overview</p> <ul style="list-style-type: none"> Identify how many devices are running Windows 10 vs. Windows 11. Determine which devices require an upgrade or replacement.
✓	<p>Windows 11 Compatibility Check</p> <ul style="list-style-type: none"> Assess hardware eligibility for upgrade. Identify devices that cannot support Windows 11 and why (e.g., RAM, storage, CPU).
✓	<p>Actionable Insights</p> <ul style="list-style-type: none"> Track upgrade progress over time. Justify budget and resource needs with clear reporting.

Visualizing Your Readiness

- **Pie charts:** Overview of Windows 10 vs. Windows 11 adoption.
- **Detailed tables:** Device status, upgrade eligibility, and key hardware details.
- **Historical trends:** Track progress over time.

Who Can Access the Windows 11 Readiness Report?

- **Existing Device customers** can access the report as part of their managed device security and compliance services.
- **Organizations interested in a Windows 11 transition** can experience the report through a Proof of Value (POV) with Device, gaining insights before making a full commitment.

The Windows 11 Readiness Report ensures IT teams have the insights needed to plan an efficient, secure transition before the Windows 10 end-of-life deadline.

Get Started with Device: A Seamless and Successful Transition

Device enables organizations to seamlessly navigate the complexities of upgrading to Windows 11. By shaping the transition around the needs of your business, Device ensures that you move forward with confidence, without the delays and resource drain that typically come with manual upgrades.

With Device, your organization can take full advantage of modern, cloud-native management from day one. Our platform simplifies the migration process, minimizes disruption, and ensures that your devices remain secure and up-to-date throughout the transition and beyond. Whether you're refreshing your existing devices or embracing a fully cloud-native approach, Device provides the infrastructure needed to ensure success.



- [Book a Demo](#)
- [Register for Device](#)
- [Case Studies](#)
- [LinkedIn](#)

Start your journey to Windows 11

Member of
Microsoft Intelligent
Security Association





Devicie empowers in-house IT teams and MSPs to transition their organizations to a cloud-native state by automating the implementation and ongoing management of Microsoft Intune. Our multi-tenant solution allows for efficient and consistent management of endpoints across multiple tenants with zero-touch configuration, automatic updates, application patching, built-in remediation, and enhanced management and compliance reporting. With Devicie, in-house IT teams and MSPs can ensure that end-users are productive, secure, and uniformly adhering to agreed compliance standards at scale, while freeing up critical resources to focus on other high-value projects and professional service offerings. For further details, visit www.devicie.com.